

# GEORGIA RECYCLING COALITION MONTHLY NEWSLETTER - NOVEMBER 2025

## Conference Highlights

Thanks to all everyone who attended our 34th Annual Conference: *Shaping the Future*. Special appreciation to our speakers, sponsors and exhibitors for your generous support. A link to the conference evaluation form was sent to attendees; we welcome your input as we look toward our 35th year in 2026!





[View Presentations](#)



SPECIAL THANKS TO OUR CONFERENCE EXHIBITORS

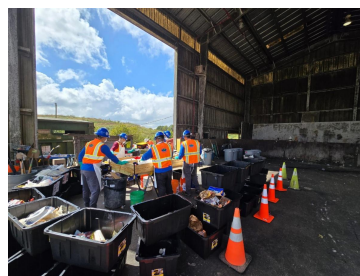
America's Thrift Stores  
Brightmark  
Georgia Composting Council  
Sonoco Recycling  
Greif Recycling  
Smurfit Westrock  
Waste Pro  
Becker Complete  
Sansom Equipment

National Equipment Dealers  
Sibelco  
WM  
Yancey Bros  
Eco Sneakers Foundation  
Fomar Industries  
TireTREK  
GA Baler and Compactor

Member News

**GA SW Characterization Study Underway**

Geosyntec Consultants, using money from a Solid Waste Infrastructure for Recycling (SWIFR) grant, performed a Waste Characterization Study at the Athens-Clarke County Landfill, October 6 - 10. The Athens-Clarke County Landfill was one of three sites selected for this unique study. The other sites



selected were the Laurens County Landfill and the Pine Grove Landfill in Columbus. This is the first waste characterization study for the state of Georgia in over 20 years. Residential waste was dumped and then sorted to track what exactly their residents are throwing in the trash. This data collection will help guide future education to promote increased waste diversion and recycling programs/activities. They also completed a sort at the RMPF later in October.

**Shaw Sports Turf**

Shaw Sports Turf is proud to return in 2026 as The Official Synthetic Turf Provider of the College Football Playoff for the third straight year. From their innovation in Calhoun, Georgia, to the championship stage in Miami, Shaw Sports Turf will once again showcase its Game ON® technology, delivering high-performance surfaces that elevate the experience for athletes and fans alike.



OFFICIAL SYNTHETIC TURF SPONSOR OF THE COLLEGE FOOTBALL PLAYOFF



**2025 Frat Beach Clean-up**

The year's annual gathering, involving an unofficial rough estimated 8,000+ college students gathering beachside on St. Simons Island the day before the annual GA/FL football game, included a small army of KGIB volunteers *Making A Difference*.

In all, 33 KGIB volunteers and staff members worked a combined 115 hours beside Glynn County staff to remove trash. Fighting an incoming high tide, KGIBers worked inside of the massive crowd to remove freshly dropped trash and costume parts from the sand and ocean, which also prevented marine debris.

In total, KGIBers removed roughly **ONE TON** of trash from the beach sand and ocean water - that's doesn't include the additional trash removed by the County employees. Congratulations to Keep Golden Isles Beautiful on an incredibly successful event.

## Renew Your Membership Today

For those still pending, please renew as soon as possible and, as always, let us know if we can assist or be of further service. Thank you for your support as we work together to fulfill our mission. If you received a lapsed notice, no worries...we can reinstate your membership on receipt of dues. **Join today!**

## Industry News



### Glass Organizations Merge

The Glass Recycling Coalition (GRC) and the Glass Recycling Foundation (GRF) have come together under one name: Glass Recycling Foundation (GRF). Both organizations share the same mission of closing gaps across the glass-recycling supply chain, and we're uniting to amplify impact. As part of this merger, they're unifying communications so that updates live

in one place. Make sure to follow their official GRF LinkedIn page (Glass Recycling Foundation). All news, grants, tools, and event information will be posted on the official GRF page going forward. The new organization will continue to provide the same valued work and share the same types of grants, tools, and events to keep us fully in the loop. Learn more about the merger, by viewing information on [LinkedIn page](#).

### MRF BMP Guide Released

Recently, Closed Loop Partners' Center for the Circular Economy, in collaboration with American Beverage and with support from RRS (Resource Recycling Systems), published new guidelines to strengthen U.S. recycling operations as Extended Producer Responsibility

laws gain momentum in the U.S. The new guide shares tactical best practices to help MRFs optimize their operations, strengthen financial outcomes, and increase material recovery rates and quality amid regulatory shifts.



“Collaboration with MRF operators, commitment to high standards, innovation, and transparency are essential for Producer Responsibility Organizations to

achieve EPR targets,” said Jeffrey Fielkow Chief Executive Officer, Circular Action Alliance. "Circular Action Alliance supports this playbook as a practical guide for working together to maximize recovery and deliver program compliance and measurable results for a circular economy." [Read](#) full article.



### Sustainable Products Made from Cork

"The sound of a cork popping out of the end of a bottle is known across the world. It often precedes moments of celebration, a shared meal or simply the quiet enjoyment of a glass of wine. But many who've taken part in the simple ritual may not realize that it's also a synonym for sustainability, natural wonder, and even human ingenuity.

Cork, the humble material used for centuries to seal bottles, is a unique product not only for the way it's grown, but also for the plethora of inventive uses people have found for it — which go far beyond the ubiquitous bottle stoppers. Cork is used in everything from the building of spacecraft to the insulation of homes, and it can replace rubber or plastic on just about anything that needs protection from heat or vibration. Thanks to the unique, delicate conditions in which it grows, cork is also a powerful, natural carbon sink, meaning it absorbs harmful CO2 from the atmosphere and locks it away." Read full article by [Duarte Dias and Ramy Inocencio \(CBS News\)](#) to learn more about cork recycling initiatives and innovative uses for cork.

### International Compost Awareness Week Poster and Bookmark Contest

Each year, the International Compost Awareness Week Committee holds a poster contest to pick a design for the annual poster. Submit your poster design using this year's theme: **"Compost! Feed the Soil that Feeds Us"**



While the poster contest is for high school students, college students, and adults, there is a bookmark contest for children in Grades 3–8. [Learn more](#) about the poster and bookmark competition. **Deadline to apply is November 14th.**

### Links for the Latest News and Views

- [Ascend Elements Produces Recycled Lithium Carbonate](#)
- [Choosing the Right Dumpster for Recycling](#)

---

## Calendar of Events

November 12-15, 2025  
**RCon (formerly WasteCon)**  
Columbus, OH

## 2025-2026 Sponsors

### PARTNER LEVEL

Brightmark  
Coca-Cola Company  
Georgia Beverage  
Association  
Greif Recycling  
Mohawk  
Shaw Industries Group

### SUSTAINER LEVEL

American Chemistry  
Council  
GFL Environmental  
Pepsico  
Pratt Industries  
Rubicon  
Smurfit Westrock  
Waste Eliminator  
Waste Pro  
Waste Wiz Consulting  
WM

### PATRON LEVEL

Emory University  
Luck Stone Atlanta Stephens  
NAIMA  
Newnan Utilities  
Republic Services  
Sibelco

## GRC 2025 Board of Directors

Carliss Bates, Vice-President  
City of Savannah  
Sanitation Department

Page Beckwith  
Keep Newnan Beautiful

Emily Groth  
City of Mableton

Jason Johnson  
Fulton Metals Recycling

Jeff Lipscomb  
JFL Environmental

Jamey Moran  
Ripple Glass

Danny Morgan  
Greif Recycling

Marla Prince, President  
WM

Scott Terrell, Treasurer  
Jacobs Engineering

Mason Towe  
University of Georgia  
Office of Sustainability

Denise Young  
Athens-Clarke County  
Recycling Division



Georgia Recycling Coalition | Post Office Box 550667 | Atlanta, GA 30355 US

[Unsubscribe](#) | [Update Profile](#) | [Constant Contact Data Notice](#)



Try email marketing for free today!