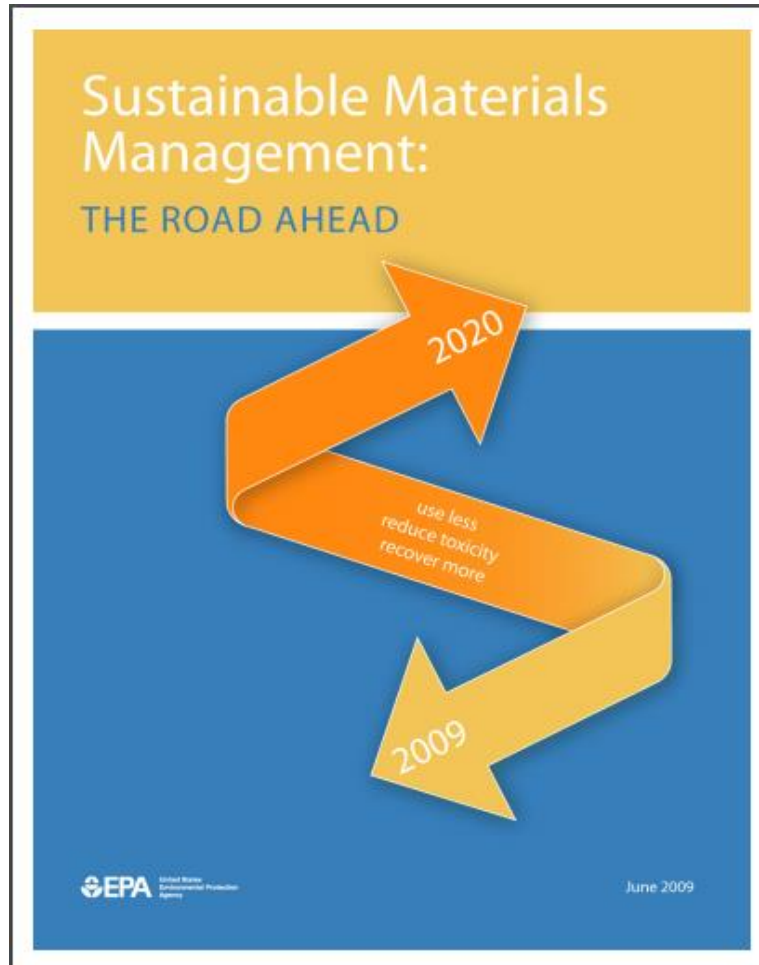


US EPA's Sustainable Materials Management Program

Georgia Recycling Coalition Annual Conference

09/19/2018

Sustainable Materials Management



“An approach to serving human needs by using/reusing resources productively and sustainably throughout their life cycles, generally minimizing the amount of materials involved and all associated environmental impacts.”

Sustainable Materials Management: The Road Ahead, EPA (2009)

SMM Analysis of the US Economy

Table 1: Summary of Top-Ranked Materials, Products, and Services

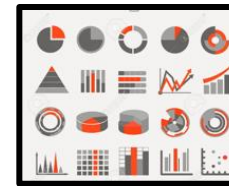
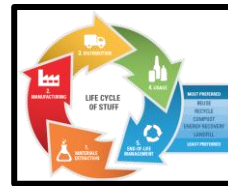
Material, Product, or Service	Final Rank			Environmental Aspects Significantly ⁽¹⁾ Contributing to Final Rank			
	DI	IC	FC	Direct Impact/Resource Use/Waste Perspective	Intermediate Consumption Perspective	Final Consumption Perspective	
Food Products & Services	Dairy farm products	19	–	–	LUC		
	Poultry and eggs	20	–	–	LUC		
	Meat animals	6	6	–	LUC	LUC, FAETP, TETP, EP	
	Food grains	13	–	–	LUC, EP		
	Feed grains	9	15	–	LUC, FAETP, TETP, EP, MU	ADP, LUC, FAETP, TETP, EP	
	Miscellaneous crops	16	–	–	FAETP, TETP, EP		
	Meat packing plants	–	11	7		LUC, FAETP, TETP, EP	LUC, FAETP, TETP
	Poultry slaughtering and processing	–	–	17			LUC,
	Eating and drinking places	–	16	5		LUC, GWP, FAETP, TETP, POCP, EP	LUC, GWP, ODP, HTP, FAETP, MAETP, TETP, FSETP, MSETP, POCP, AP, EP, MU, MW, EU
	Food preparations, n.e.c.	–	–	19			FAETP, TETP, EP
Fluid milk	–	–	20			LUC	
Textiles	Cotton	2	2	–	FAETP, TETP, EP	FAETP, TETP, EP	
	Apparel made from purchased materials	–	13	2		FAETP, TETP, EP	ODP, HTP, FAETP, TETP, MSETP, EP
	Broadwoven fabric mills and fabric finishing plants	–	10	–		FAETP, TETP, EP	
Nonrenewable Organics	Coal	5	9	–	ADP, MU, MW	ADP, MU, MW	
	Crude petroleum and natural gas	4	4	–	ADP, GWP, POCP	ADP, GWP, POCP, AP, EP	
	Industrial inorganic and organic chemicals	3	3	–	ODP, HTP, MSETP, MW	ODP, HTP, MSETP, POCP, EP, MW	
	Petroleum refining	8	5	3	MU, MW	ADP, GWP, POCP, AP, EP, MU, MW	ADP, GWP, ODP, POCP, AP, EP, MU, MW
	Electric services (utilities)	1	1	1	GWP, HTP, MAETP, FSETP, POCP, AP, EP, WU, EU	ADP, GWP, HTP, MAETP, FSETP, POCP, AP, EP, MU, MW, WU, EU	ADP, GWP, HTP, MAETP, FSETP, POCP, AP, EP, MU, MW, WU, EU

US EPA's SMM Strategic Plan



- Built Environment (buildings, roads, bridges, infrastructure)
- Sustainable Management of Food
- Sustainable Packaging
- Sustainable Electronics Management

- Life-Cycle Thinking
- Measurement
- International Efforts



SMM Program Implementation

Data & Tools



WaRM

Collaboration & Convening



Measurement Matters Summit



Federal Green



Built Environment Workshop



Electronics



SMM Prioritization Tool Suite

Potential Areas of Opportunity: US

The heatmap below shows goods & services (down the left side) ranked by overall environmental, human health and socioeconomic impacts (across the top) based on the selected analysis settings. Click a good or service name to learn more about it, click an indicator name to sort by that indicator, and check out the comparison analyses below the heatmap. Click a "What's this?" link for more information.

Analysis Settings

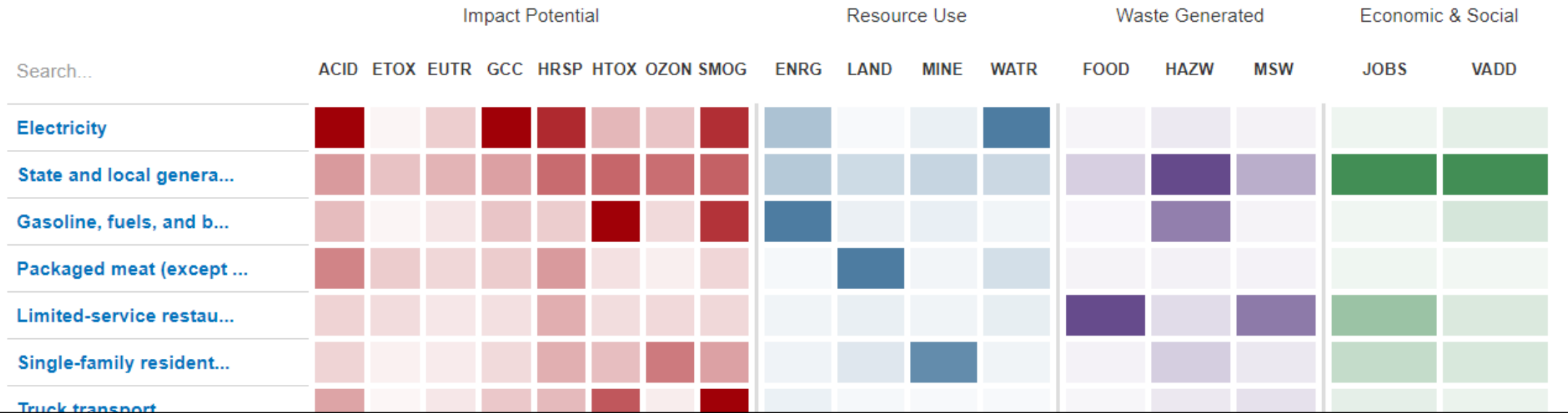


Selected

Point of Consumption, US, Full System, 2007, Consumption



[Tutorial](#) | [What's this?](#)



Screenshot: National SMM Prioritization Tool

Georgia SMM Pilot Project



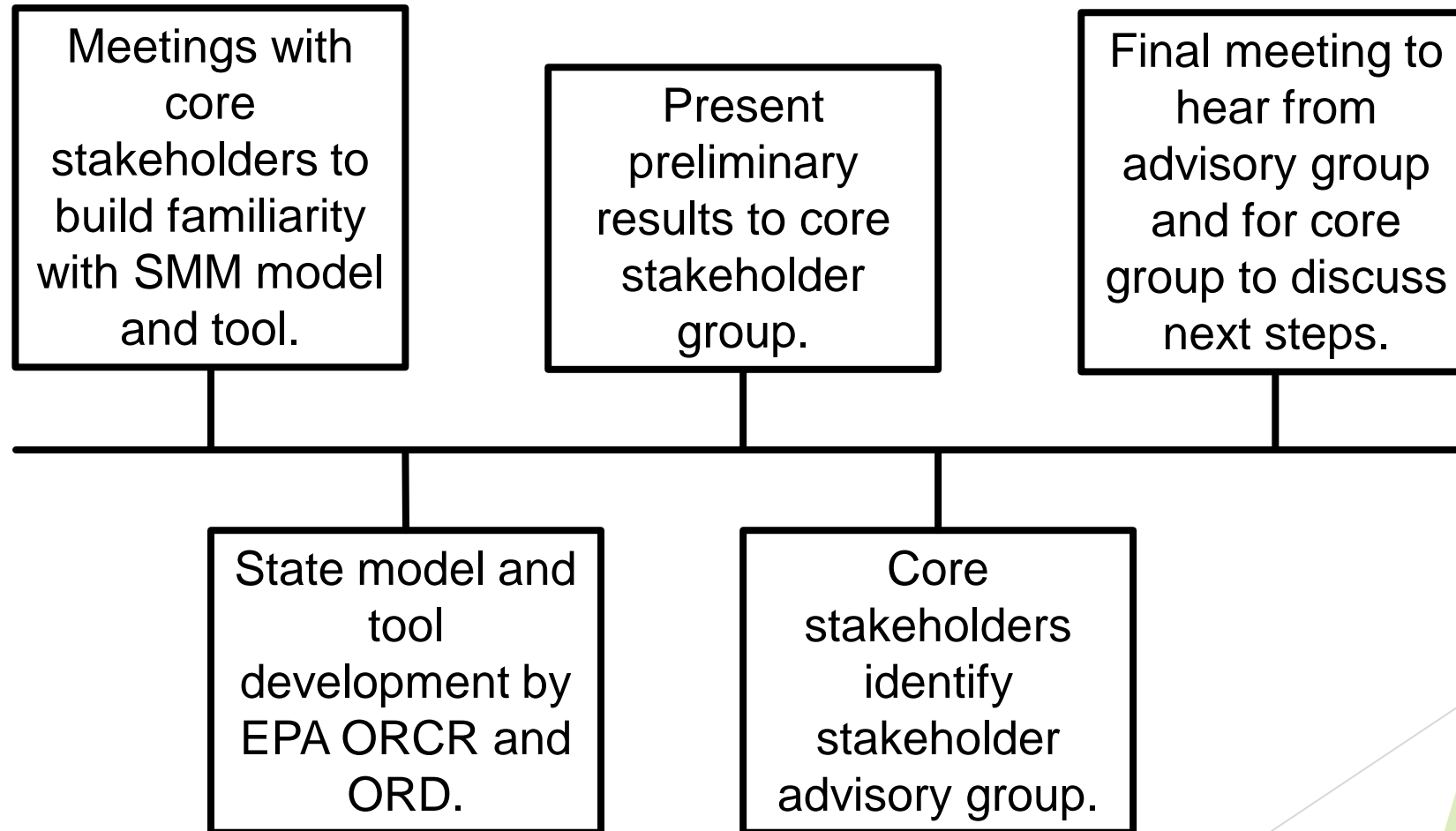
Why tons?

What does “tons”
really tell us?

Georgia SMM Pilot Project

- ▶ The goals of the Georgia Pilot were to:
 - ▶ Develop a tool to empower stakeholders to make life cycle-informed decisions tailored to their state's circumstances; and
 - ▶ Align the understanding and incentives of all life cycle players in the state.

Georgia SMM Pilot Project



Thanks for your attention!
Any questions?

Jarrold Bridge
bridge.jarrod@epa.gov